

# Meeting Minutes



DLR Group

Architecture Engineering Planning Interiors

100 East Pine Street  
Suite 404  
Orlando, FL 32801

o: 407/648-1331  
f: 407/648-1433

Meeting Date	11.29.17
To	UF 619: Project Team
From	DLR Group
Location	Reitz Union Room 2201
Project	UF-619 UF_IBC & La Casita
Project No.	36-17105-00
Attendees	See attached attendee list
Purpose	Workshop#7 – Project Team and Student Advisory Meeting

1. Review Progress to-date (PowerPoint, see attached)
  - a. Reviewed Floor Plan Development for each institute
  - b. Reviewed Exterior Development for each institute
  - c. Reviewed Interior Development for each institute
2. IBC Feedback
  - a. Use colors of Red, Black and Green. Rebranded the logo based on patterns, etc. Will provided a link ([http://www.adinkra.org/htmls/adinkra\\_index.htm](http://www.adinkra.org/htmls/adinkra_index.htm)) for reference of the Adinkra Symbols, which were used for inspiration in the Black Affairs logo.
  - b. Front of the Reitz Union would this be the same concept? It's different
  - c. Combination of the pattern base of symbols and at the evening. Pull additional colors from the flags. Like the idea of the colors changing from lighting vs. being permanent in the glazing.
  - d. Review how occupants can look outside more clearly, but from the outside it's a more obstructed so the glazing it's a fishbowl.
  - e. How long does carpet last? 8-10 years. High traffic areas need something more.
  - f. A student comment: floor tiles do not make her feel at home. She would prefer the wood plank look in lieu of the tile.
3. IHLC Feedback
  - a. How do you enter the Living Room? It's not clear how the entry in to the space works and how Ambassadors interact with visitors. The ambassadors don't seem to have a clear view of the door.
  - b. Is the balcony covered? It's currently shaded with the flag screen. The porch has about 7-8 feet of cover. Concerned with having a place to go outside when it's raining. It was re-emphasized a covered for courtyard/protection from rain.
  - c. Concerned about the furniture placement on the exterior if there's no protection from the rain.
  - d. Rain and exterior fans in the courtyard – how does that maintain?
  - e. Integrated Solar PV for the courtyard structure.
  - f. Is the courtyard more flexible and flat or is there more structured planter type seating?
  - g. Roof top area, whether a green roof or something. We are exploring a 49 person or less space up on this Roof level, but it would be up to each institute to enforce the limitations on occupancy.
  - h. Brighter blues and yellows in the colors. The floor tiles with the color would be better than the black/white/gray pattern tiles.
  - i. The colors need to remain to be more intense. There was a discussion that the screen muted some of the colors.
  - j. How many pops of color will there be in the institute? Walls, Floor Rugs and cabinet? DLR Group reviewed the floor plan with the conversation of where the pops of color would go, more zones that are complimentary of one another. Keeping the cabinets and the countertops more neutral will be desired.

- k. A small discussion around flyers and where could we locate them. Traditionally, they have placed these flyers on countertops so having these color flyers on top of colorful countertops would seem to conflict. Flyers could be located throughout the whole house to know what is happening on campus.
- 4. General Comments
  - a.
- 5. Next Steps
  - a. Design team will be submitting their first design submittal (Schematic Design) to UF Planning, Design and Construction and the Construction Manager.
  - b. PDC will take the project through committee reviews for feedback.
  - c. The Construction Manager (Foresight + D.E. Scorpio) will estimate the project as design to-date.
  - d. We anticipate the project will resume design with feedback mid-January 2018.
- 6. Recording – Attached Zip File.

# Meeting Attendance



**DLR Group**

Architecture Engineering Planning Interiors

100 East Pine Street  
Suite 404  
Orlando, FL 32801

o: 407/648-1331  
f: 407/648-1433

Date	November 29, 2017
Meeting Type	Design Workshop #5: Project Team
Meeting Location	University of Florida Campus
Project	UF IBC and La Casita (IHLC)
Project No.	UF Project No. 619; DLR Group Project No. 36-17105-00

Attendees:	Name	Representing	E-mail:
	Nicole Nichols	DLR Group	
	Mike Lindsey	DLR Group	
	Lindsey Perez	DLR Group	
	Robert Lemus	HAS/La Casita	RNL0396@ufl.edu
	Daniela Vargas	HAS/La Casita	danielavargas@ufl.edu
	Courtnie Moodie	IBC	cmoodie@ufl.edu
	Chris Wilde	La Casita/IBC	Chris.wilde.2014@ufl.edu
	Beuadelaine Mesadieu	IBC	bmesadieu@ufl.edu
	Will Atkins	MCDA	
	Dr. B.J. Fullwood	IBC	bjsfullwood@gmail.com
	Mauricio Perez	Student	mauricioperez@ufl.edu
	Hayat Kemal	IBC/La Casita	ht.kemal@ufl.edu
	Gabe Lara	MCDA	
	Carl Simien	MCDA	carls@multicultural.ufl.edu

**IBC & IHLC**

University of Florida

**REVITALIZING OUR ROOTS**

SHAPED BY **HISTORY**

REBUILDING FOR **TOMORROW**

# Meeting Schedule

## Programming

Workshop 1      9/20

Workshop 2      9/28

Workshop 3      10/16

Workshop 4      10/23

Project Kickoff Meetings / Visioning

Space Type – Dot Voting Boards

Space Type Prioritization

Adjacencies & Massing

---

## Advanced Schematic Design

Workshop 5      11/2

Workshop 6      11/15

**Workshop 7      11/29**

Deliverable      12/7

Design Charrette

Plan and Materials Development

**Advanced Schematic Design Presentation**

Advanced Schematic Design Package

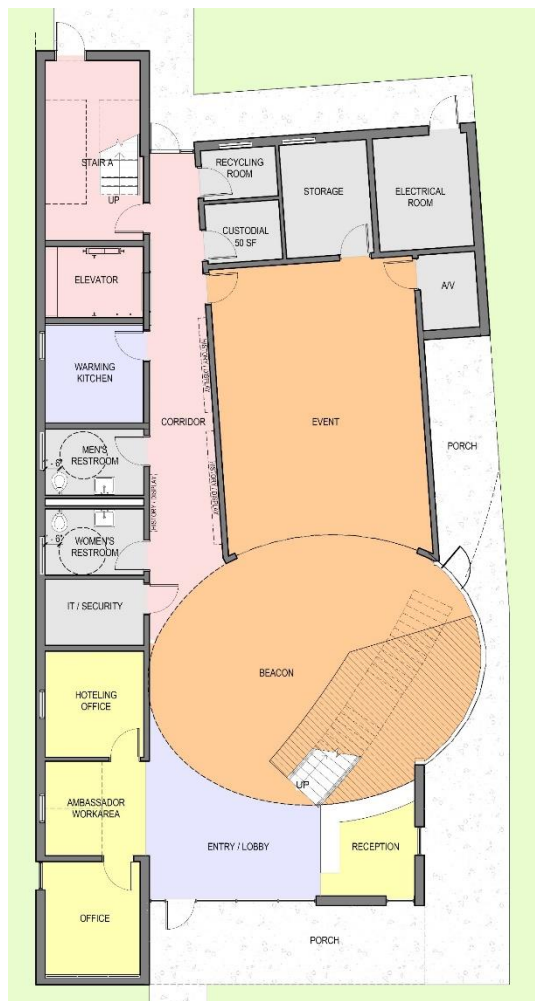
# Meeting Schedule

- |           |   |
|-----------|---|
| Session 1 | 4 – 5:00p Project team and Student Advisory Committee <ul style="list-style-type: none"><li>- Review of plans</li><li>- Review of new exterior material concepts</li><li>- Review</li></ul> |
| Session 2 | 6 – 7:30p Open Session  |

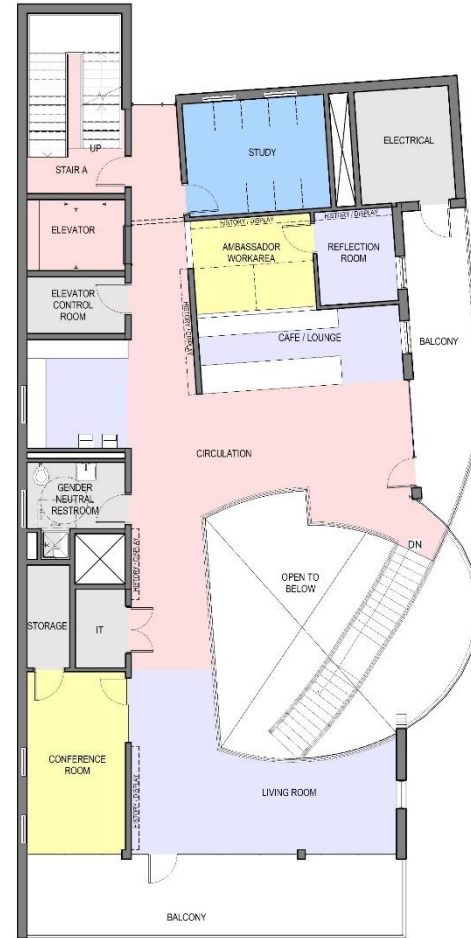


# "Social Gathering Concept" IBC



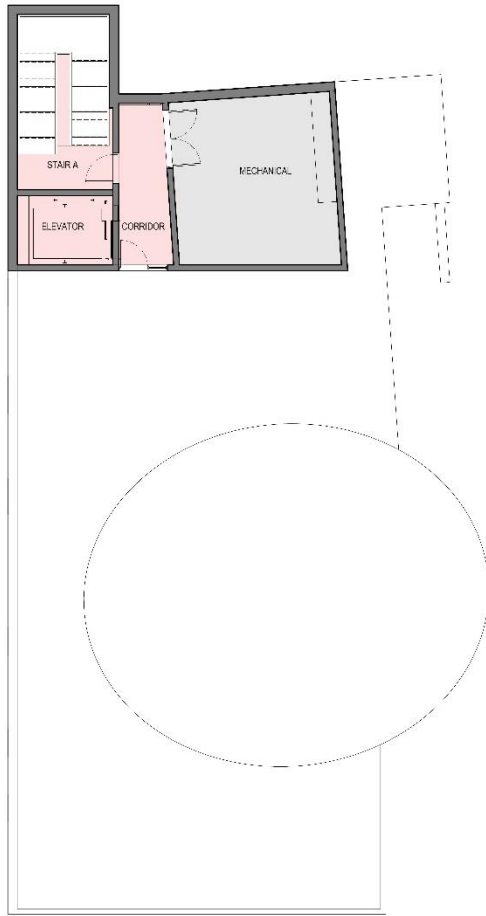


LEVEL ONE



LEVEL TWO





# EXTERIOR STREET VIEW

IBC



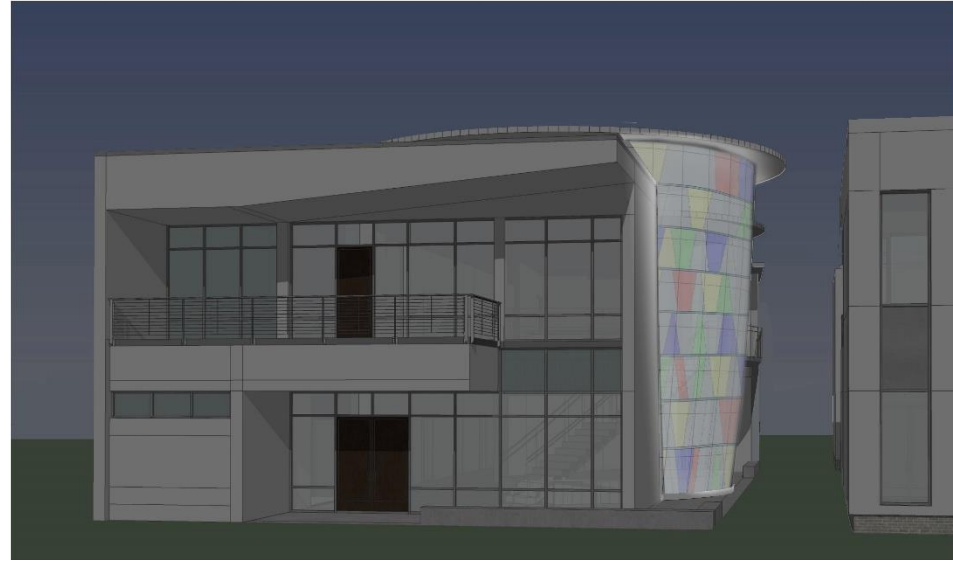
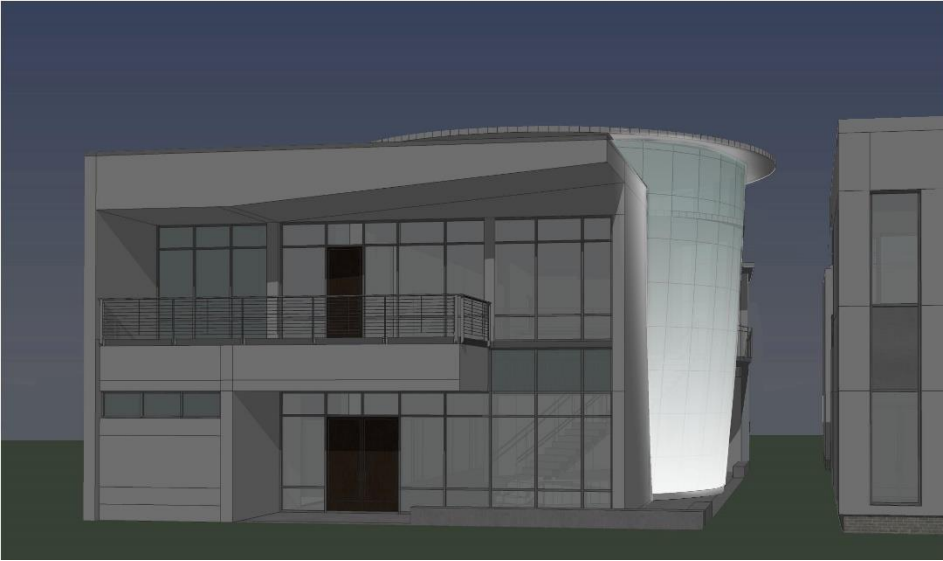
AERIALVIEW

IBC



BEACON

IBC

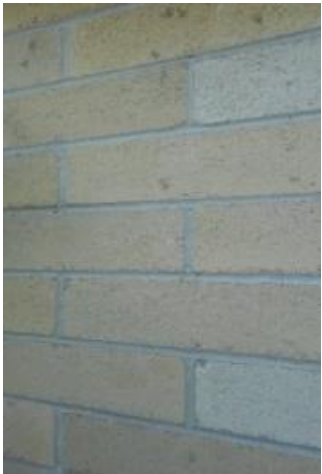
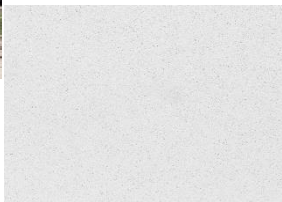
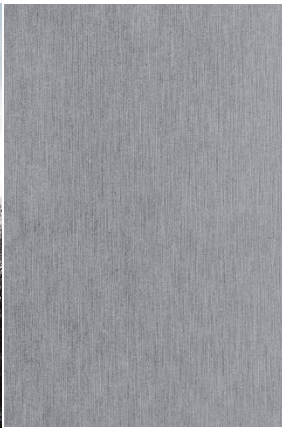




# CONTEXT



# Exterior Material IBC



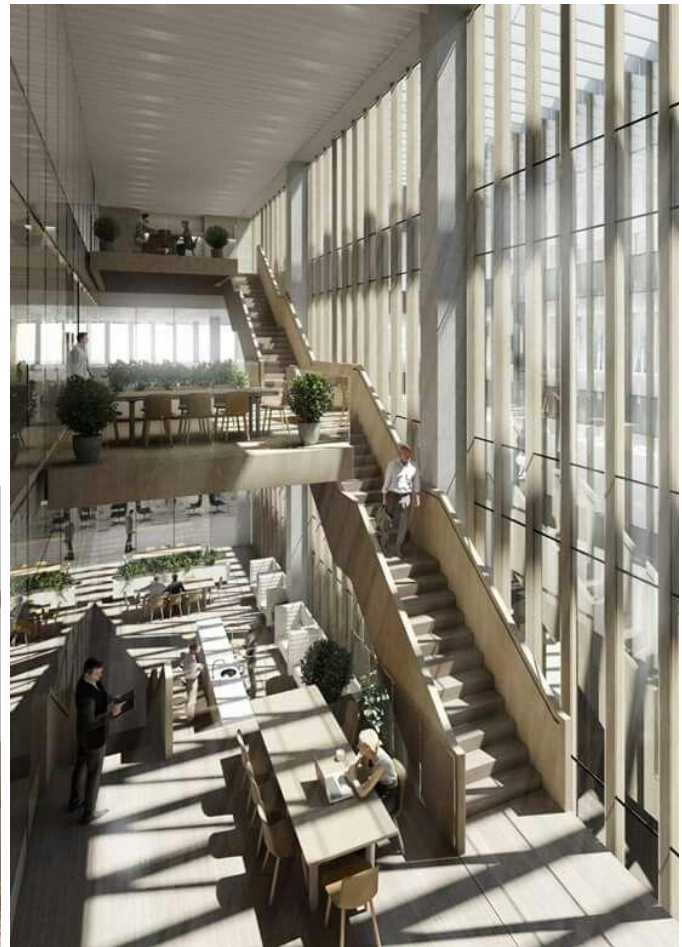
# Interior Concept IBC

The background of the slide is a complex, abstract geometric pattern. It consists of numerous rectangular and triangular blocks of varying sizes, arranged in a non-repeating, interlocking fashion. The color palette is monochromatic, featuring shades of black, dark grey, medium grey, light grey, and off-white. The overall effect is a dense, textured surface that resembles a modern architectural facade or a high-end interior wall treatment.

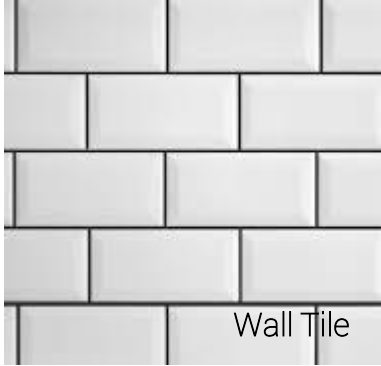




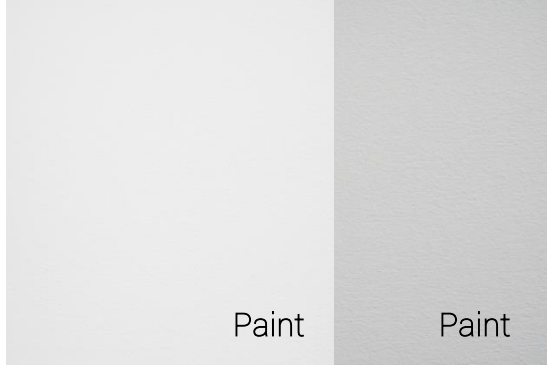








Wall Tile

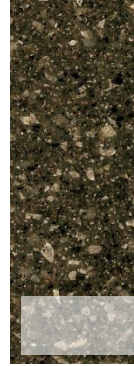


Paint

Paint



Art



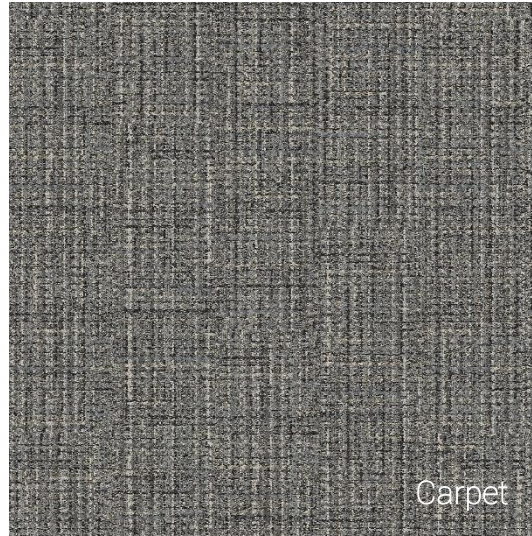
Solid Surface Countertops



Floor Tile



Solid Vinyl  
Wood Plank



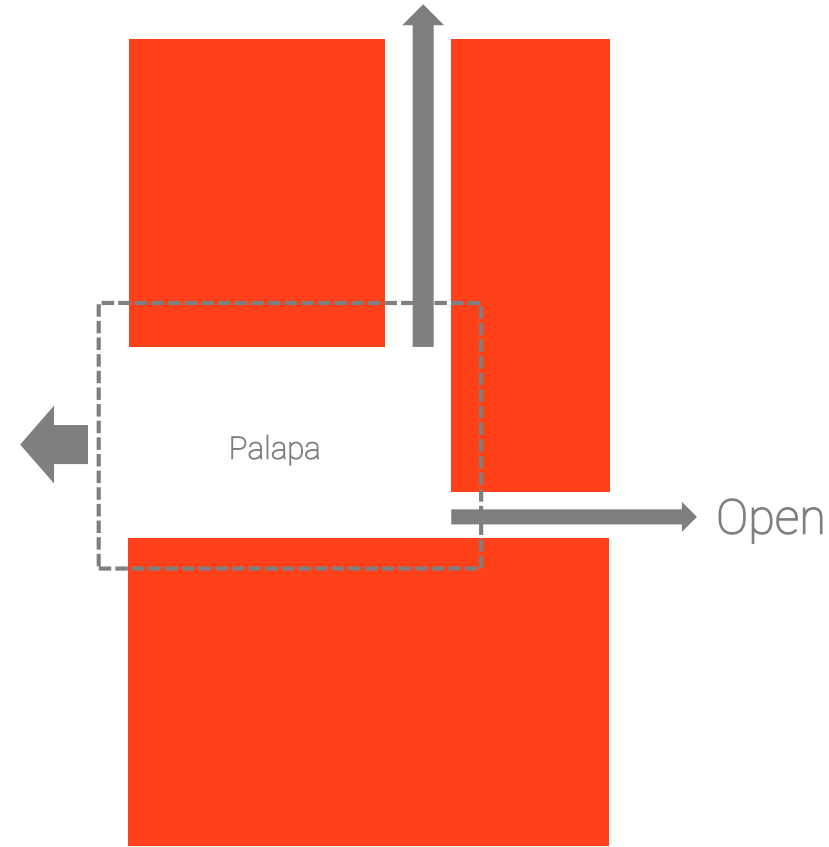
Carpet

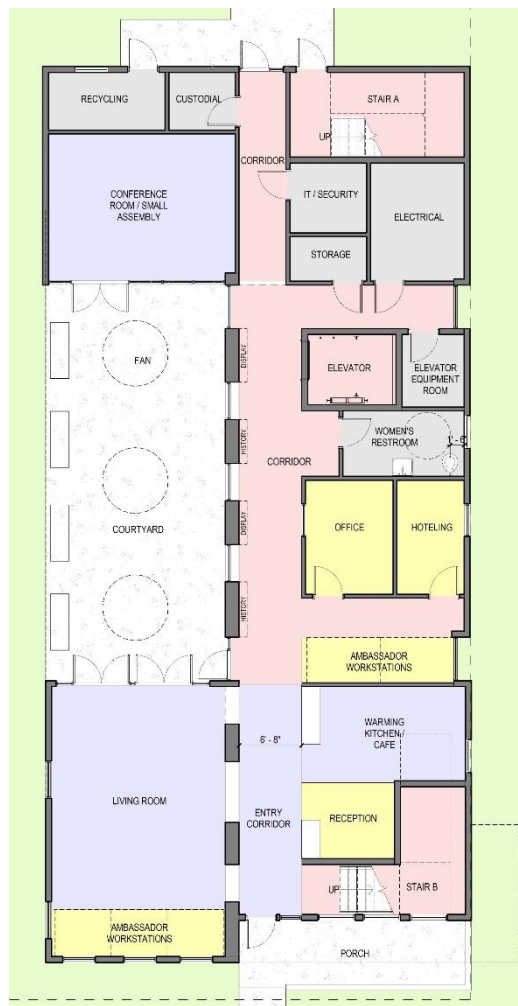


Laminate

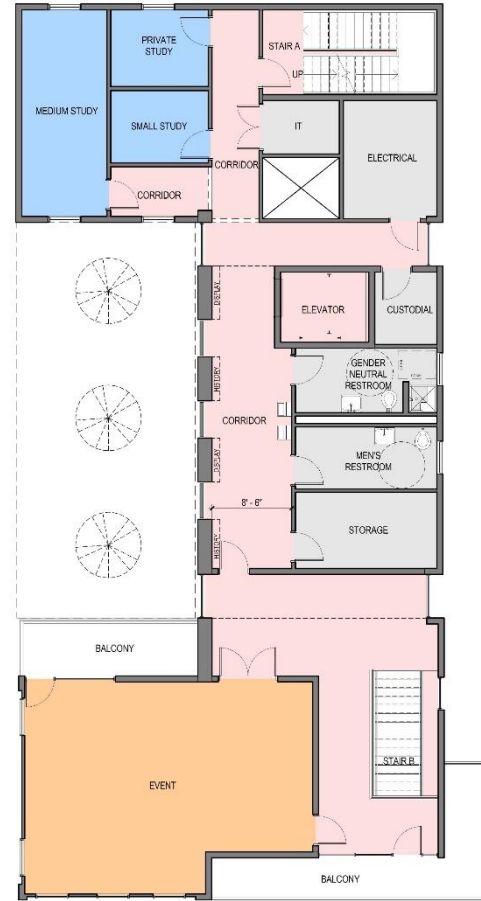


# “Palapa” Concept IHLC



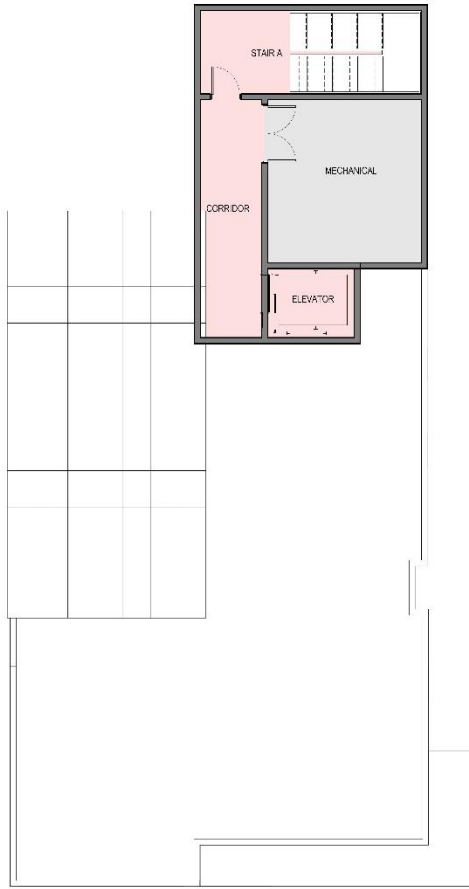


LEVEL ONE



LEVEL TWO





# EXTERIOR STREET VIEW

IHLC



# EXTERIOR STREET VIEW

IHLC





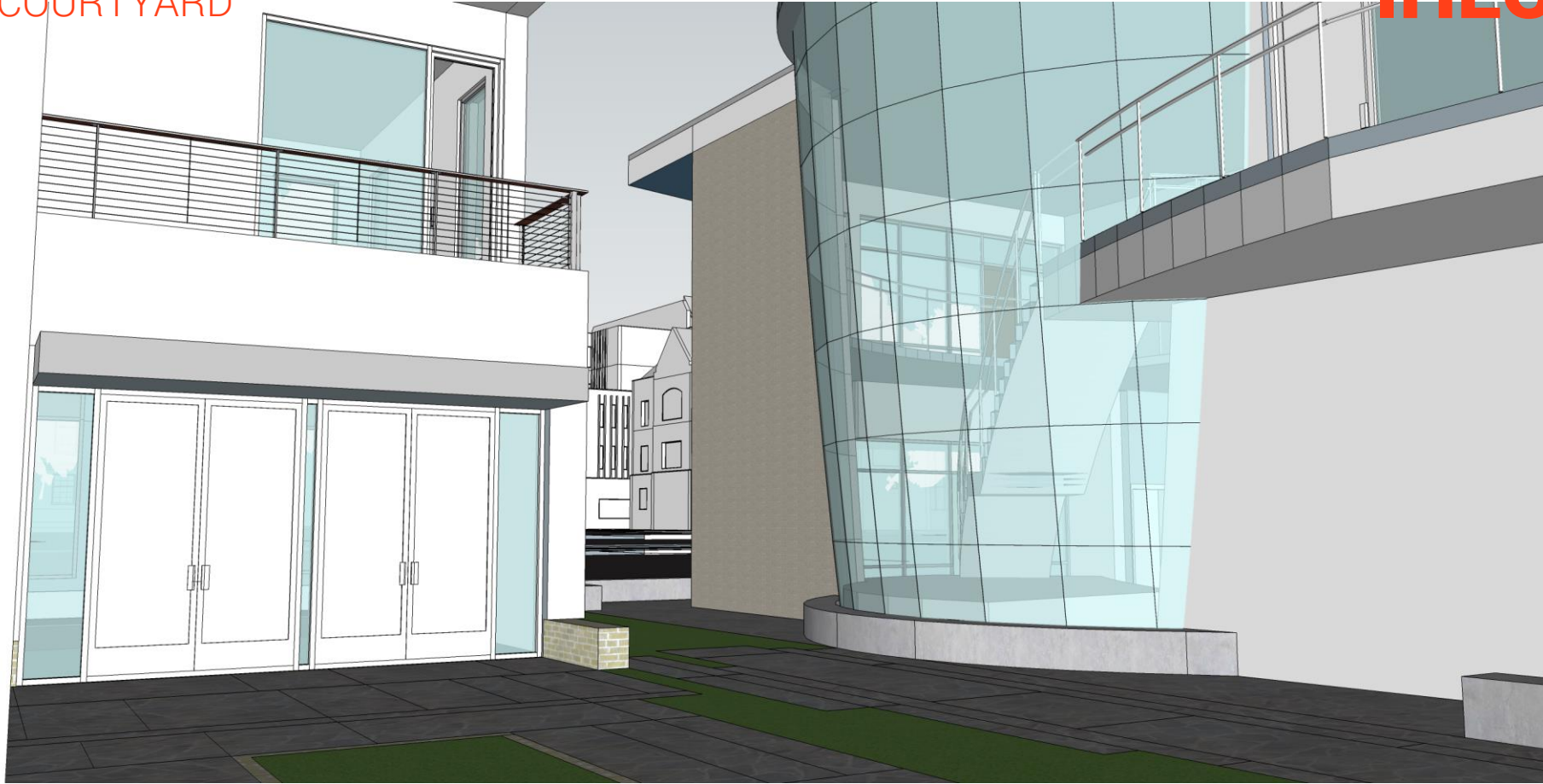
AERIALVIEW

IHLC



# COURTYARD

IHLC





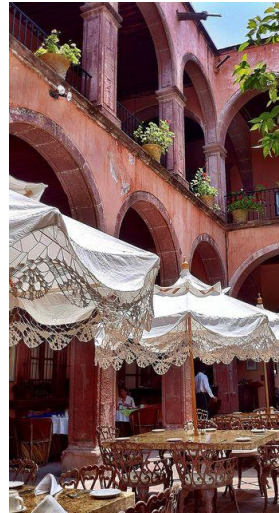
# Exterior Material IHLC



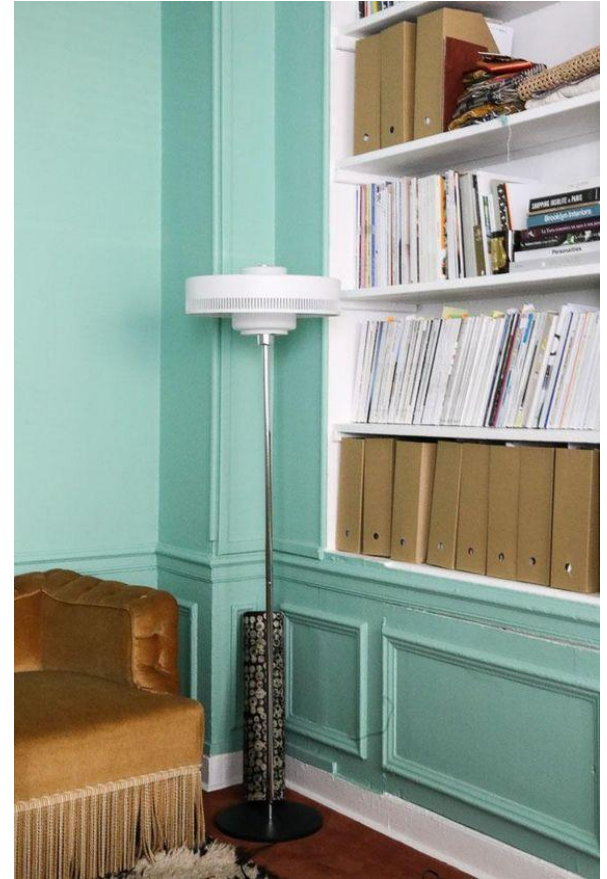


# Interior Concept **IHLC**





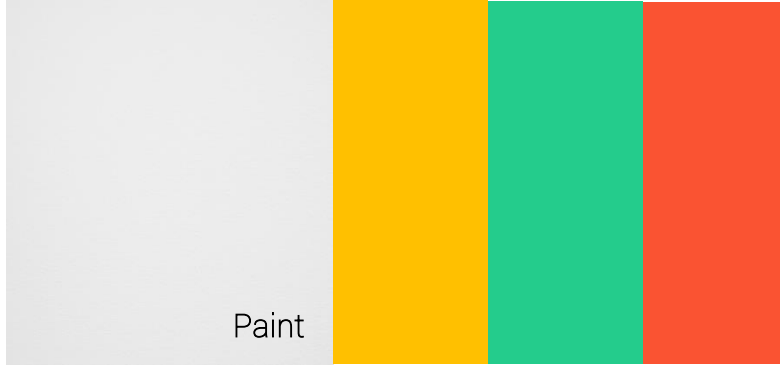








Wall Tile



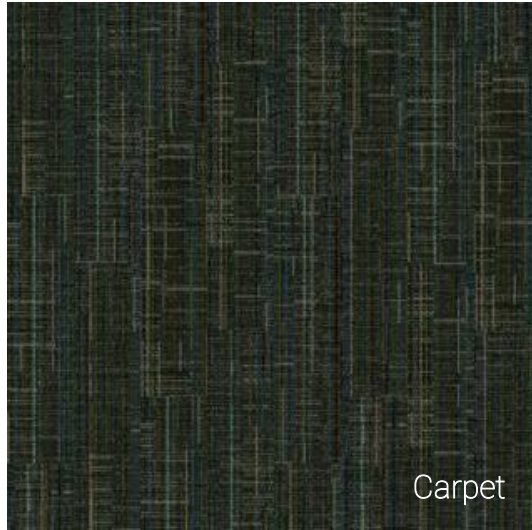
Paint



Solid Surface  
Countertops



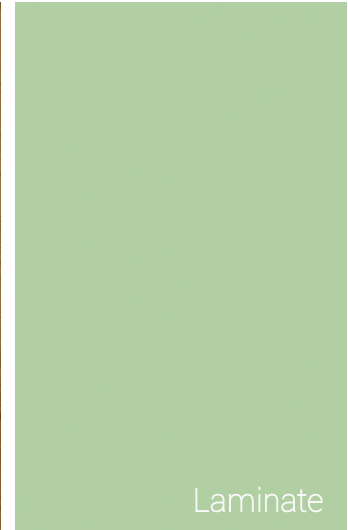
Floor Tile



Carpet



Solid Vinyl  
Wood Plank



Laminate

SITE

IBC /IHLC



# SITE

# IBC /IHLC





# SECTION

# IBC /IHLC

IHLC

IBC

