

# Meeting Minutes



**DLR Group**

Architecture Engineering Planning Interiors

100 East Pine Street  
Suite 404  
Orlando, FL 32801

o: 407/648-1331  
f: 407/648-1433

Meeting Date	03.13.18
To	UF 619: Project Team
From	DLR Group
Location	Reitz Union, MCDA Fishbowl
Project	UF-619 UF_IBC & La Casita
Project No.	36-17105-00
Attendees	Project Team
Purpose	Design Development Meeting #3 – Project Team and Student Advisory

1. Thank you to the UF team, student advisory, & design team – Dr. David Parrott, Vice President of Student Affairs
2. Overview of Presentation and Team Meeting Goals – DLR Group
  - a. New interior views
  - b. Updated items per last meeting's feedback
  - c. Note this is the last Design Development Meeting before deliverables, with next step being budget check-up and CD's.
  - d. Bidding is expected in June-July for final pricing, and construction is expected to begin in July per the current schedule.
3. Introduction – DLR Group
  - a. Overview of site plan updates
    - i. Texture & color separation at courtyard between the two buildings, allows for more usable outdoor space. Design team would like feedback on the approach shown.
    - ii. Bike parking – long-term parking located in the back and short-term parking has been grouped in the front to maximize green space.
    - iii. Gates are shown around courtyard, in front and back end, to remain open during operational hours.
    - iv. Quick render of street view shows the scale and look of buildings along University Ave.
4. IHLC Updated Design – DLR Group
  - a. Fire riser added behind ambassador's desk where stair wall was (no space taken from usable program areas)
  - b. Interiors updates:
    - i. Review of inspirational images
    - ii. Updated materials palette
    - iii. Rendered floor plans with floor finishes features wood throughout, with some carpet at offices and tile in the restrooms.
    - iv. First look at main living room, café, restrooms, and warming kitchen.
    - v. Event space shows options for moveable glass partition with opaque design in center of glazing to provide privacy, with more visibility in the doors at each end.
    - vi. History wall proposal across from Event space, proposed as a location to relocate the original fireplace mantel from La Casita and design display wall around it. Design team would like feedback on this from students during the breakout sessions.
  - c. Exterior updates:
    - i. Exterior look updated slightly per feedback during the previous meeting. Specific materials will be displayed during the breakout session.
    - ii. Façade features specialty CMU, shared between both institutes, with a graffiti-resistant finish and a speckled look (made from concrete).

- iii. Display of all 4 elevations, showing where each material is located.
  - iv. Potential banner locations displayed. Banners hung from balcony railings seem most feasible idea.
- d. Review VR panoramic views of the Living Room space and the Event space at La Casita.
- 5. IBC Updated Design – DLR Group
  - a. Moved entry door to Reflection Room to be accessed from stair landing at Beacon, rather than go through Ambassador's space to enter. Design team would like feedback on this from breakout session.
  - b. Door added to Event Space, nearer to chair storage, for easier access.
  - c. Grand staircase in middle of Beacon is still a project alternate, design team working to see if it can be fit into the budget but not certain right now.
  - d. Closet to house roof access ladder added to Elec. Room upstairs (no space taken from usable program areas)
    - i. Cydney M. to check variance for allowing roof access to be inside stairwell/has been done on several other campus projects.
  - e. Interiors updates:
    - i. Tile patterns were updated
    - ii. Wood LVT is suggested throughout floor, including event space
    - iii. Grand stair has a landing area to double as a place for speakers during events
    - iv. Green tile/see-through window at café to be discussed during breakout session for other finish options.
    - v. Event space operable partition glass recommended to have pattern on it to create privacy.
      - 1. Curved panel at doors will need to be straightened due to construction limitations.
  - f. Exterior updates:
    - i. Material palette updates shown
    - ii. Creating patterns with CMU's on the façades
    - iii. Review of the 4 building elevations, displaying how the CMU's highlight the plan layout and orientations.
    - iv. Glass at Beacon needs to be discussed per expressed concern over visibility (comfort & safety concerns). The current design shows glass at front façade with the beacon being more private at the lower level:
      - 1. Alternative for Beacon as a private gathering space is to make it solid at the ground level and create a wall ~ 9' – 0" A.F.F. with windows punched out for natural light.
      - 2. At front entry, alternate design would minimize the glazing and create a glass surround to a solid wall that brings in light, but creates more privacy. The same approach is suggested in the balcony above for continuity.
      - 3. Design team would like input with regards to both options.
    - v. The patterns at the CMU walls are based on graphic motifs in African art, textiles, and architecture, following Jacynta's idea at previous meeting.
    - vi. If the main entry remains as full glazing, adding a pattern graphic is suggested to provide privacy.
      - 1. This pattern would be a film so that it could be changed.
  - g. Review VR panoramic view of the Beacon with added screenings of woven pattern to add privacy. Pattern at Beacon ceiling tries to follow and grow out of the structure holding up the glass/roof.
  - h. VR Panoramic view at the second level balcony over the Beacon and café space. Solid wall added instead of railing at upstairs living room to provide more privacy.
  - i. VR view of courtyard, showing the stripes in the glazing at the Beacon. The material is less dense in real life, material samples were brought for review during the breakout session.
- 6. Comments & Questions – Project Team and Student Advisory Group
  - a. If pattern at courtyard is all concrete, just differing in color, is there any grass?
    - i. DLR notes that full concrete allows for maximum use of outdoor event space, but there will be landscaping around the courtyard and the buildings.
  - b. Interior color schemes look plain, not representative of African American culture, and selection of green tiles does not appear meaningful (IBC).

- i. DLR notes that the design colors were muted per the requests of end-users in past meetings to serve as a backdrop for colorful displays. There is a bright red, writable wall by the restrooms that will serve to add more color to the space.
  - c. More color would not interfere with having displays on the walls, such as kente cloth designs. It doesn't have to be bold colors, but white doesn't have to be the base color (IBC).
  - d. Green tile pattern seems like a hospital, it's very horizontal. It would be good to see more patterning throughout (IBC).
  - e. Color specks shown in the material palette image for countertops (blues and light browns) could be used to inform the base color palette within the IBC.
  - f. Do the glass lines at the Beacon need to be horizontal? They seem to compete with the CMU pattern (IBC).
    - i. DLR notes that the glazing comes in vertical, horizontal, or random crisscross patterns, all of which have been brought for review during the breakout session. The horizontal lines make it easier to control the gradient of density from bottom to top of the Beacon. However, options can be explored for alternates.
  - g. The Reflection Room door should be placed behind ambassador's desk/in a more private location than adjacent to the café (IBC).
  - h. Could you find a yellow pattern tile to include in tile walls? (IHLC)
    - i. DLR is still looking through tile samples to introduce yellow and more vibrant colors into the pattern scheme.
7. End of Project Team Update Meeting. A general overview will be given to the students, followed by more thorough breakout sessions for each Institute in the BEC and La Salita, with exterior and interior material samples brought for students to review.

Recording-1 (145 MB):

[https://dlrgroup.zoom.us/recording/play/R\\_vqSJXQlqlqu8dm9HO4-TLVhtBM6rU5JMbA1qVb3wwltkPs1MV8jbCaDJhzFGZu](https://dlrgroup.zoom.us/recording/play/R_vqSJXQlqlqu8dm9HO4-TLVhtBM6rU5JMbA1qVb3wwltkPs1MV8jbCaDJhzFGZu)

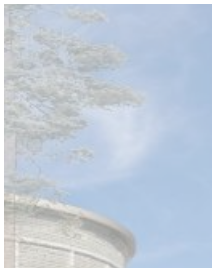
Audio Only-1 (29 MB):

[https://dlrgroup.zoom.us/recording/play/DzhTFG\\_IT2tZhQKjFVuJt9GdLVsv9IIGwEfUPMZ6XW43eUtd5rRIgcuRd2lCYwV0](https://dlrgroup.zoom.us/recording/play/DzhTFG_IT2tZhQKjFVuJt9GdLVsv9IIGwEfUPMZ6XW43eUtd5rRIgcuRd2lCYwV0)

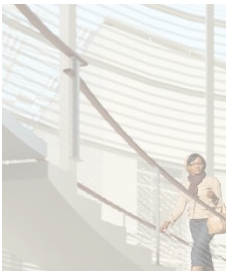


# IBC

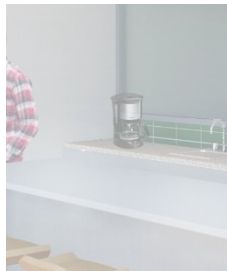
Institute of Black Culture  
University of Florida



COURTYARD



BEACON



CAFÉ / LIVING ROOM



Design development panoramic and google cardboard views



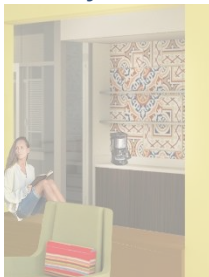


# IHLC

Institute of Hispanic-Latino Cultures  
University of Florida



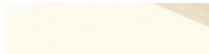
COURTYARD



LIVING ROOM / ENTRY



EVENT SPACE



Design development panoramic and google cardboard views



# IBC & IHLC

University of Florida

## REVITALIZING OUR ROOTS

SHAPED BY HISTORY

REBUILDING FOR TOMORROW



# Agenda

## 1 **SCHEDULE OVERVIEW**

## 2 **SITE / UNIVERSITY AVE**

REVIEW SITE CONTEXTUALISM

## 3 **IHLC**

FLOOR PLAN UPDATES

INTERIOR VIEWS / PALETTES / MATERIALS

EXTERIOR VIEWS / MATERIALS

COURTYARD VIEW

## 4 **IBC**

FLOOR PLAN UPDATES

INTERIOR VIEWS / PALETTES / MATERIALS

EXTERIOR VIEWS / MATERIALS

COURTYARD VIEW





# 1 SCHEDULE OVERVIEW

# Meeting Schedule

## Programming

Workshop 1	9/20	Project Kickoff Meetings / Visioning
Workshop 2	9/28	Space Type – Dot Voting Boards
Workshop 3	10/16	Space Type Prioritization
Workshop 4	10/23	Adjacencies & Massing

---

## Advanced Schematic Design

Workshop 5	11/2	Design Charrette
Workshop 6	11/15	Plan and Materials Development
Workshop 7	11/29	Advanced Schematic Design Presentation
Deliverable	12/7	Advanced Schematic Design Package
Budget Reviews	01/16/2018 – 01/26/18	

# Meeting Schedule

## Design Development

Kickoff 02/09

Phase Kickoff

Meeting 2 03/01

Exterior and Interior Development

**Meeting 3 03/13**

**Student Feedback**

Deliverable 03/30

Design Development Package

Budget Reviews 04/02/2018 – 04/20/2018

---

## Construction Documents

Zoom Meeting 05/11

Project Update

Deliverable 06/15

Construction Documents Package

Bidding 06/18/2018 – 07/13/2018

**Construction July 2018- June 2019**



# 1 PROJECT TEAM BUSINESS





# 2 SITE / UNIVERSITY AVE



## CONTEXT – SOUTH UNIVERSITY AVE.



## IBC & IHLC



CONTEXT - NORTH UNIVERSITY AVE.

IBC & IHLC



# SITE



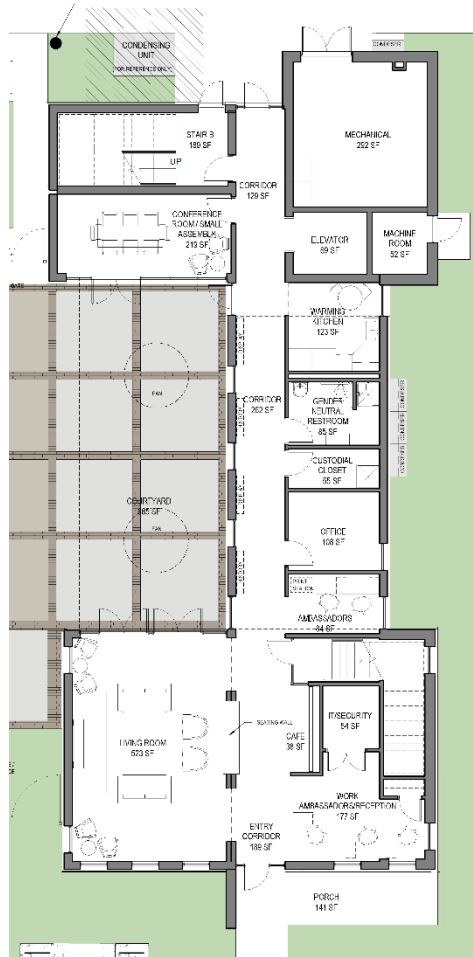




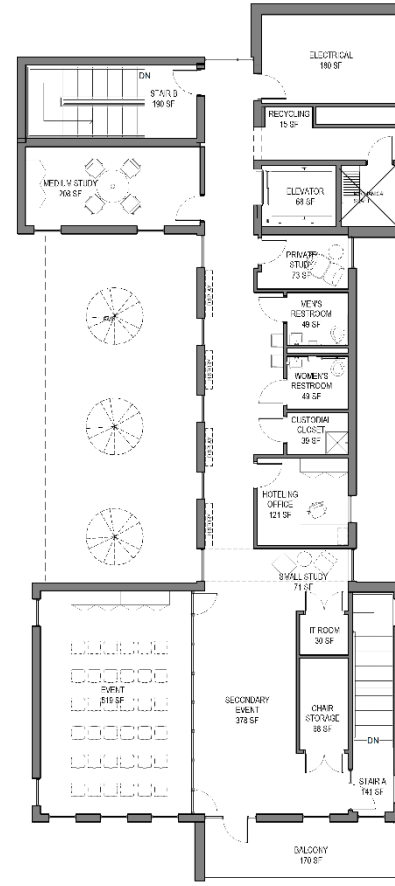




# 3 IHLC DESIGN DEVELOPMENT

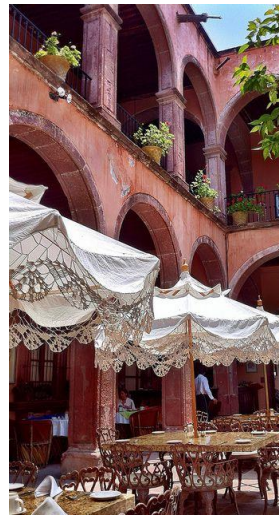


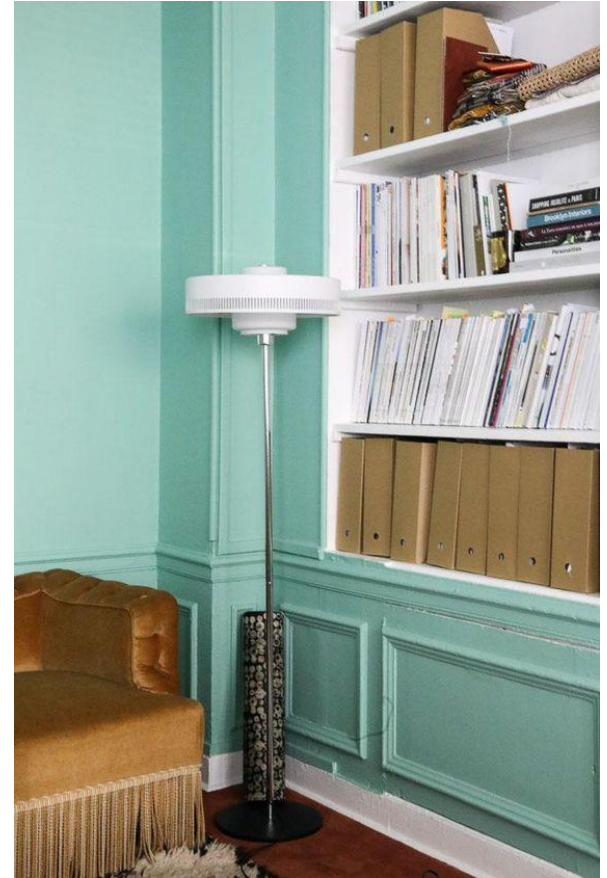
LEVEL ONE



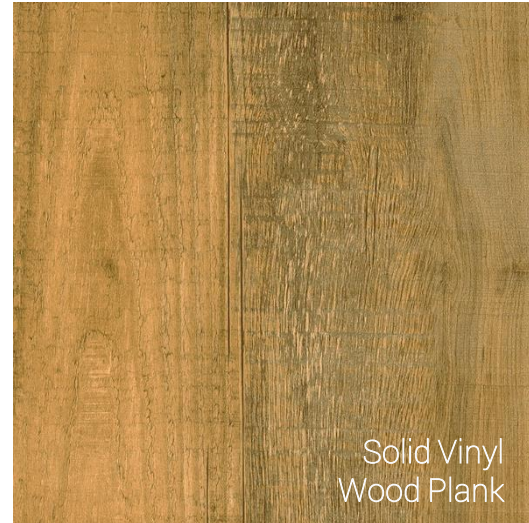
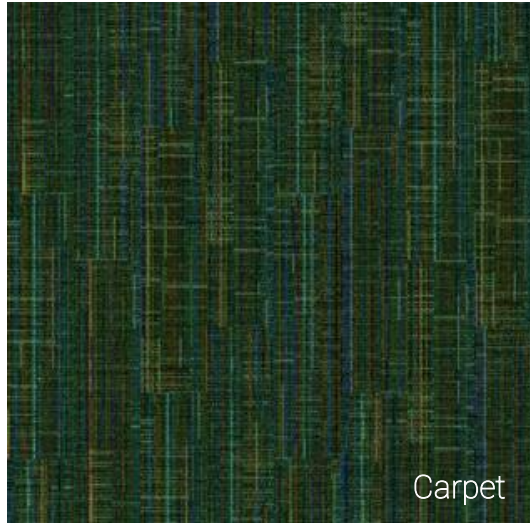
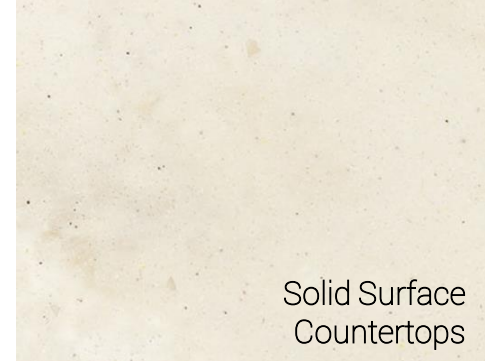
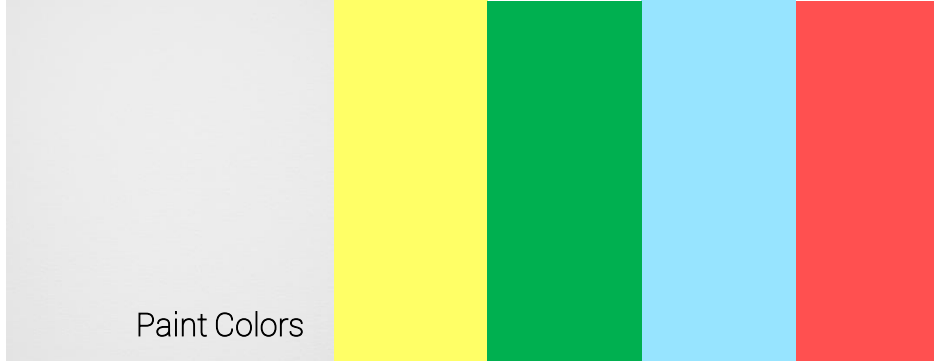
LEVEL TWO









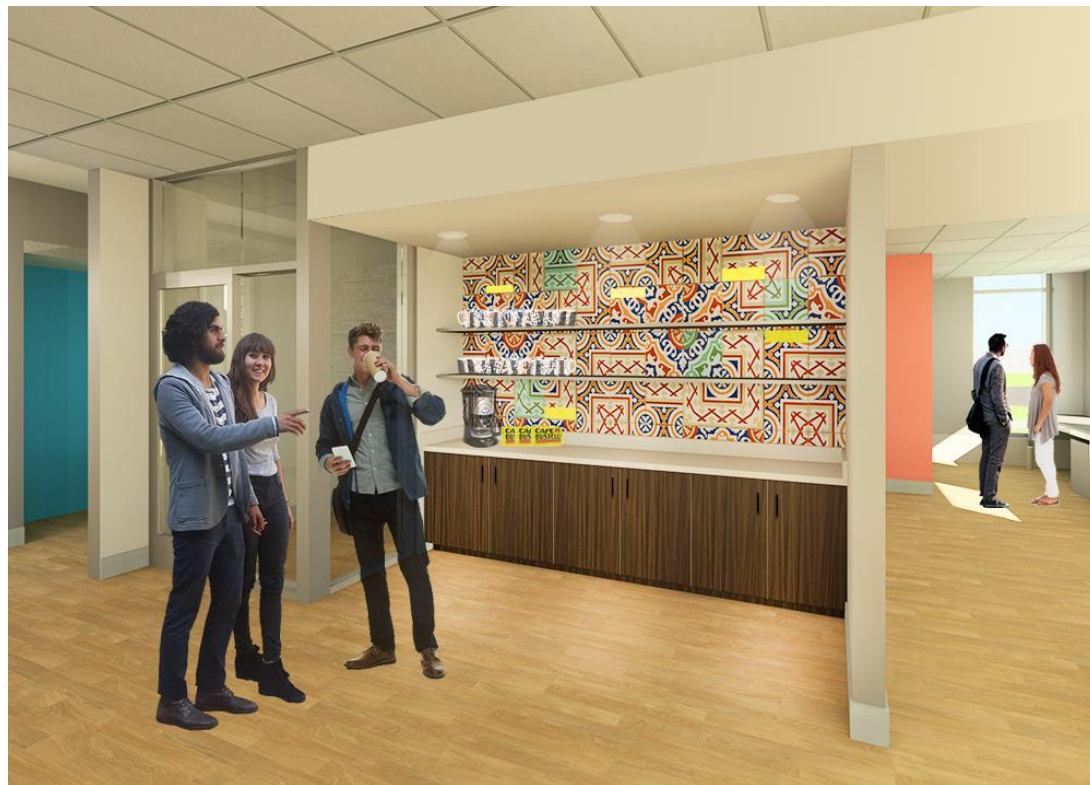






**LIVING ROOM & CAFE**





CAFÉ

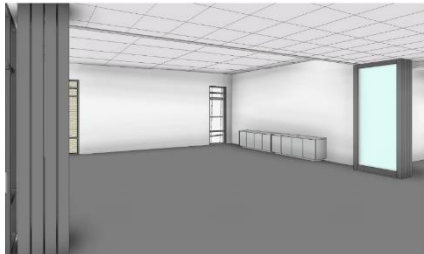
## CAFÉ PALETTE



**GENDER NEUTRAL BATHROOM**



**WARMING KITCHEN**



**FOLDING PARTITION - OPEN**



**FOLDING PARTITION - OPEN WITH CHAIRS**



**FOLDING PARTITION**



**2<sup>ND</sup> LEVEL**



**HISTORIC FIREPLACE – LA CASITA**



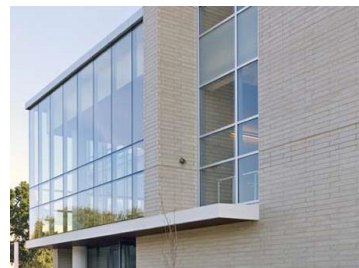
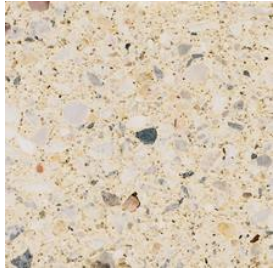
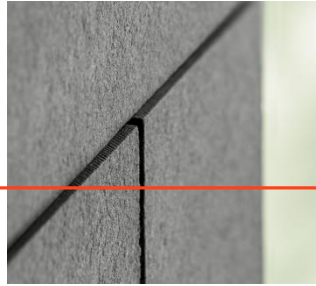
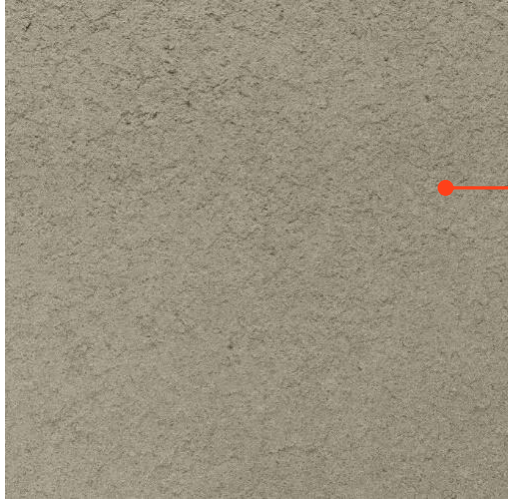
# EXTERIOR





# EXTERIOR MATERIALS

IHLC

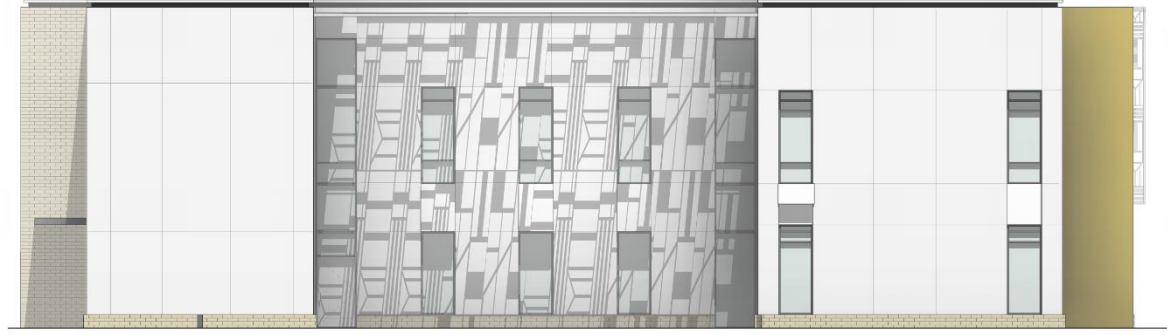


# EXTERIOR ELEVATIONS

**IHLC**



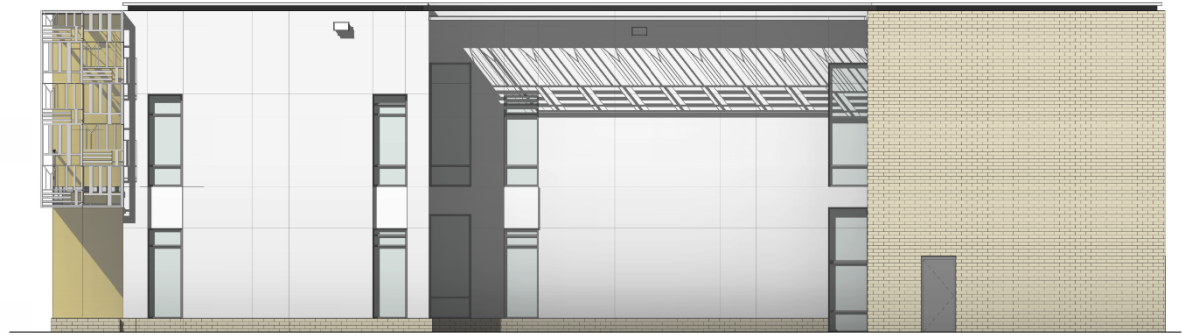
**IHLC – SOUTH ELEVATION**



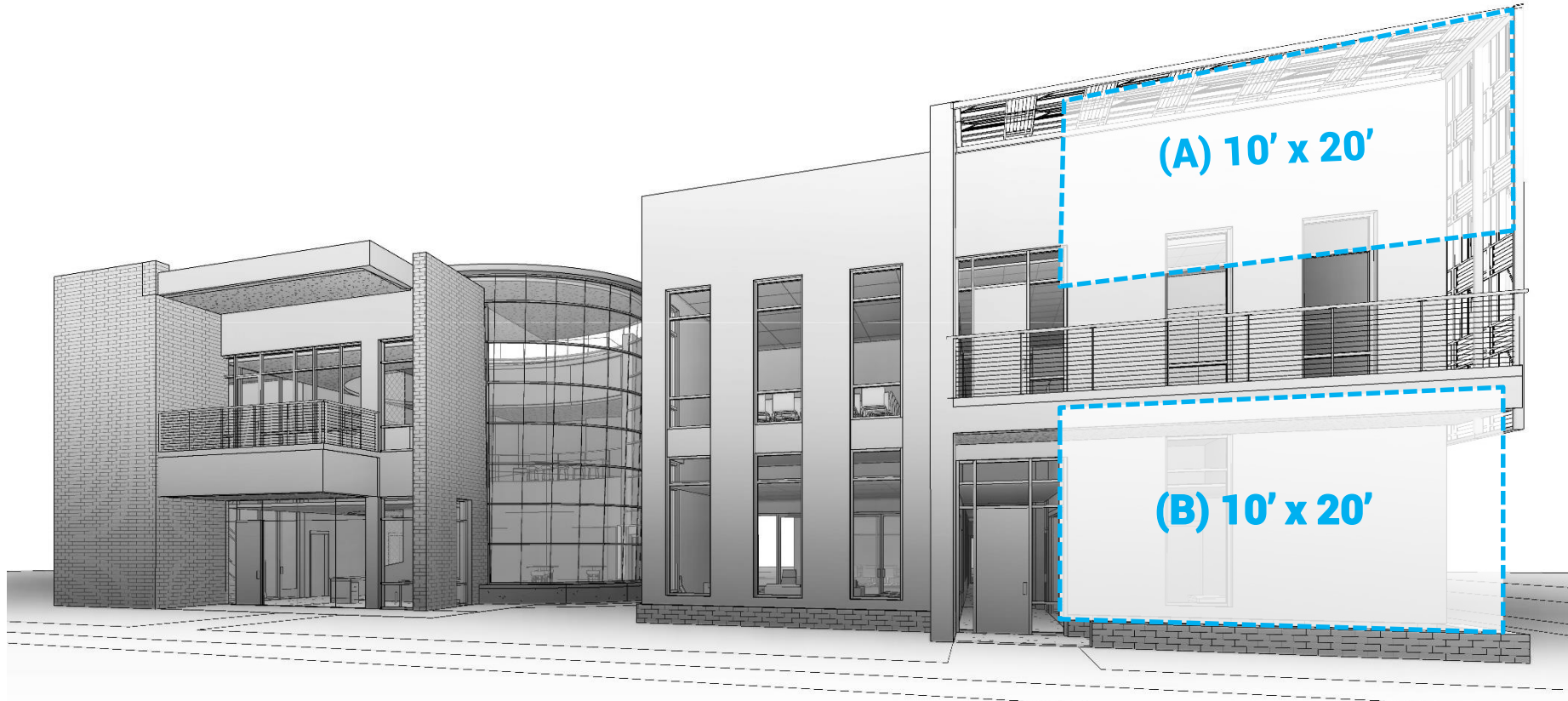
**IHLC - EAST ELEVATION**



**IHLC – NORTH ELEVATION**



**IHLC - WEST ELEVATION**







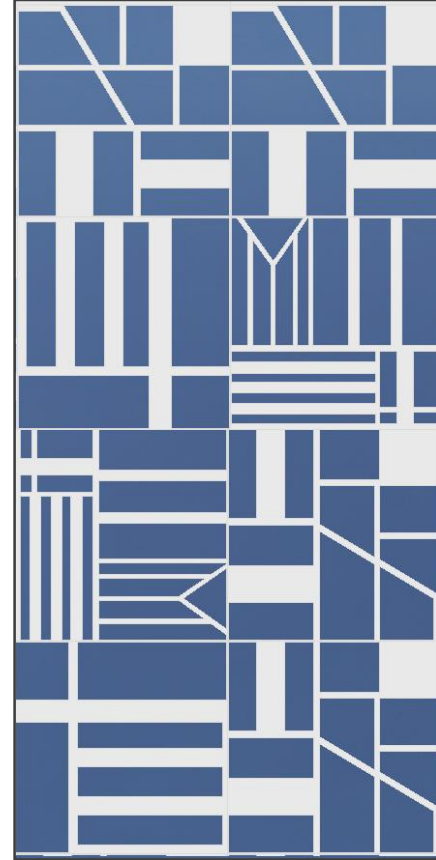
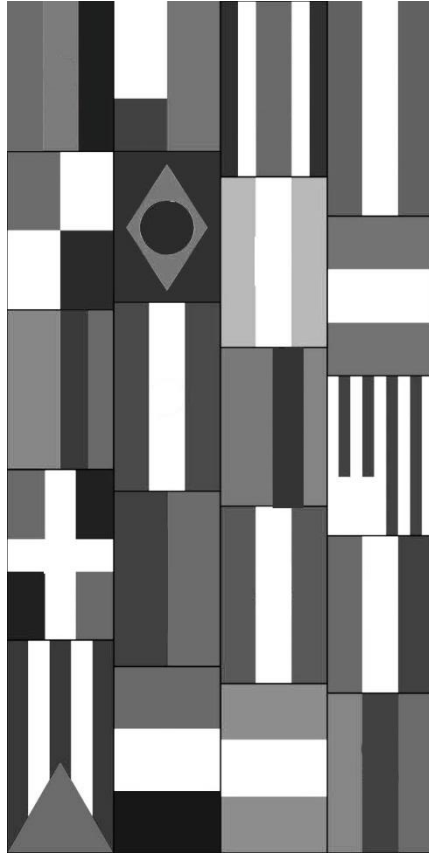
CENTRO CULTURAL CESAR CHAVEZ BUILDING – OREGON STATE UNIVERSITY



LATINO CULTURAL CENTER - PURDUE UNIVERSITY

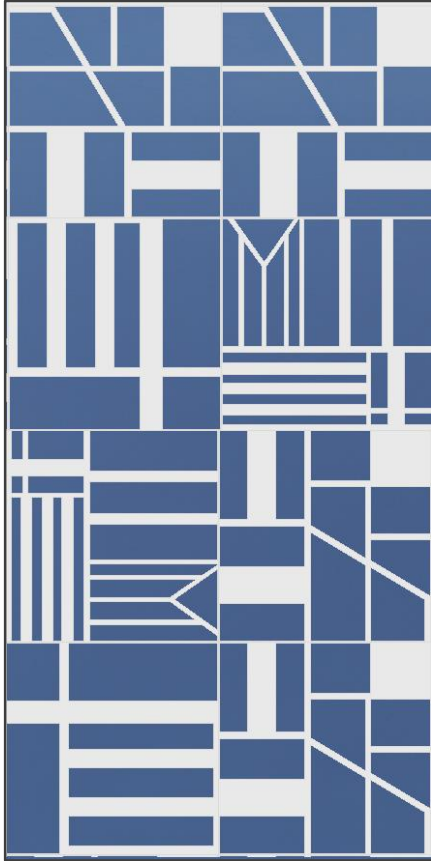
# "PALAPA" CANOPY PATTERN

IHLC



# "PALAPA" CANOPY PATTERN

IHLC

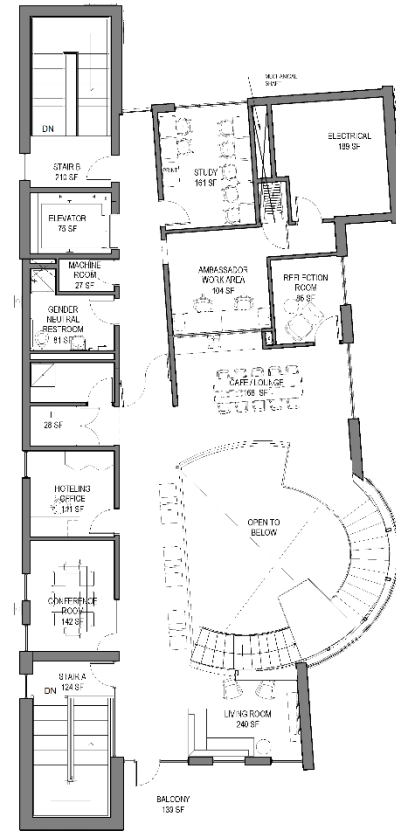
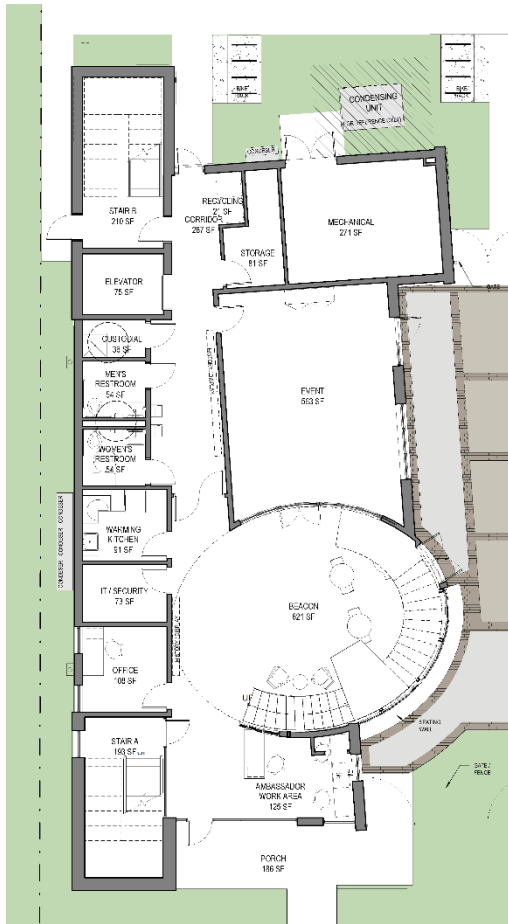






# 4

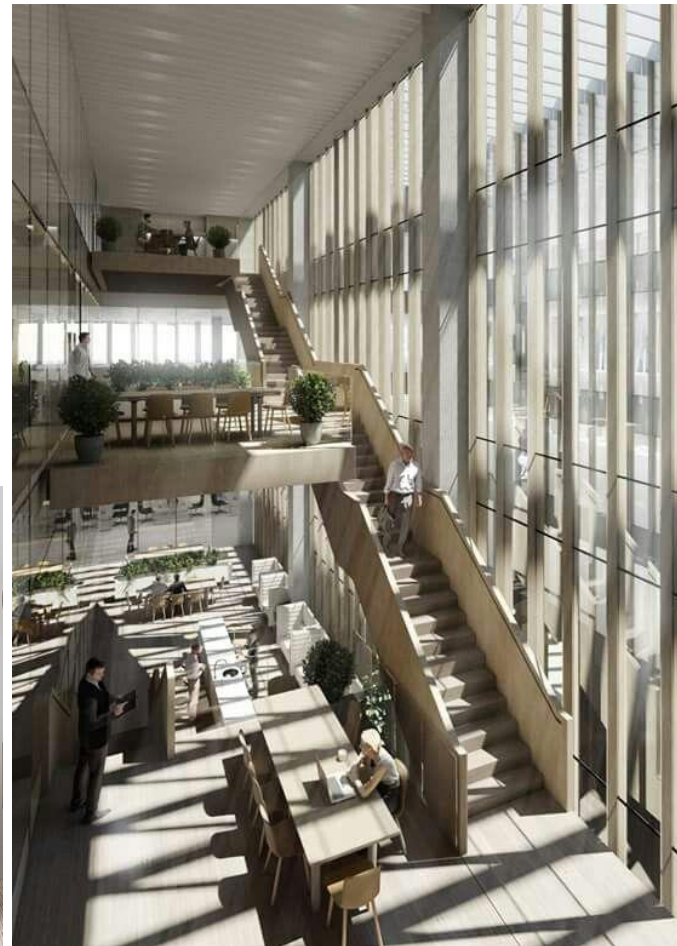
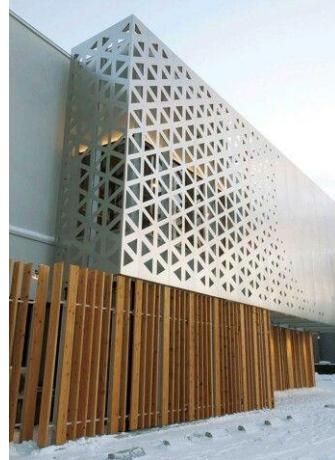
## IBC DESIGN DEVELOPMENT





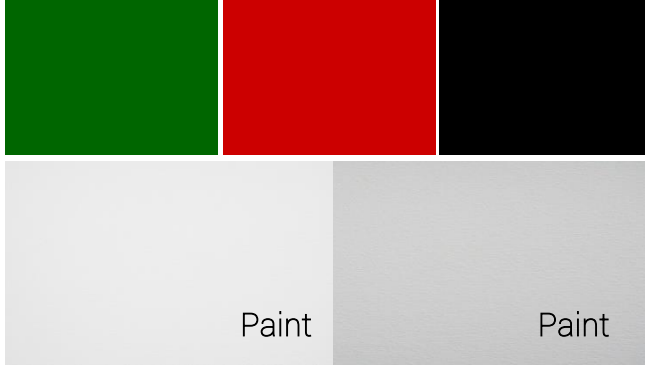








Wall Tile



Paint

Paint



Art



Solid Surface Countertops



Restroom  
Floor Tile



Solid Vinyl  
Wood Plank



Office and Conference Carpet



Laminate







## FINISH FLOOR PLANS



Beacon &amp; Entry

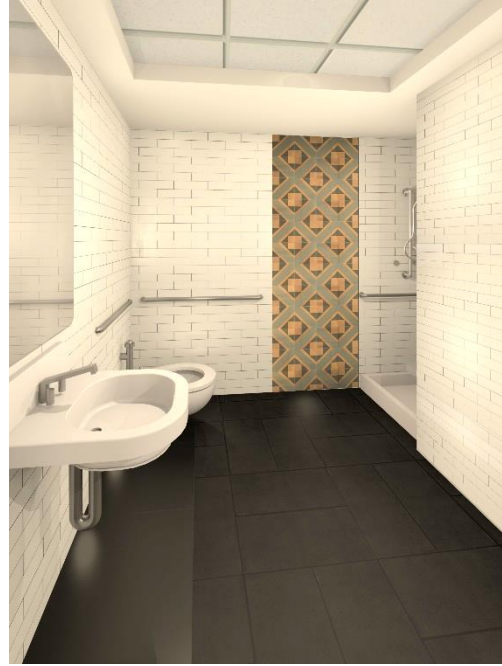


CAFÉ AT THE BEACON





**Abstract Wood Pattern**



**Woven Wood Pattern**



**Red Black Green**

## RESTROOM WALL TILE OPTIONS



**WOOD AND GLASS PANEL**

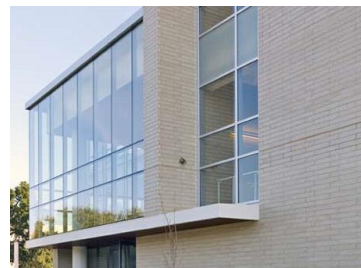
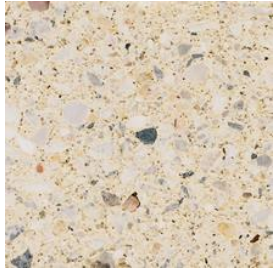
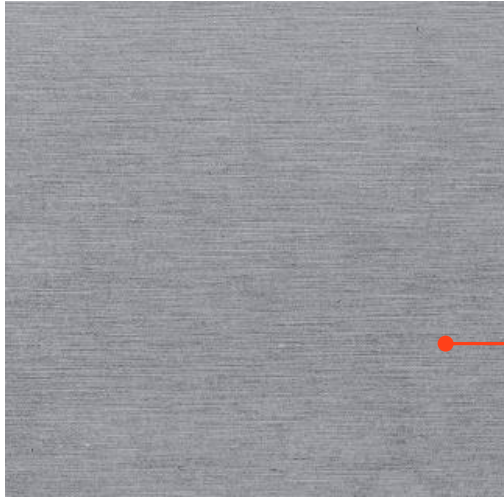
## **EVENT SPACE FOLDING PARTITION AND DOOR SYSTEM**





# EXTERIOR MATERIALS

IBC





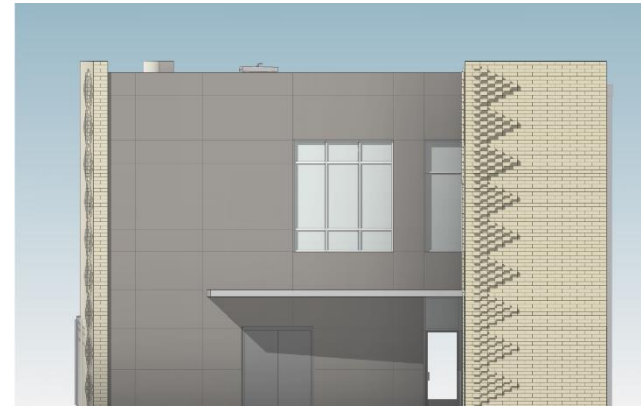
**IBC – EAST ELEVATION**



**IBC – SOUTH ELEVATION**



**IBC – WEST ELEVATION**



**IBC – NORTH ELEVATION**



**IBC – EAST ELEVATION**



**IBC – SOUTH ELEVATION**





BLACK CULTURAL CENTER – OREGON STATE UNIVERSITY



BLACK STUDENT UNION – FSU

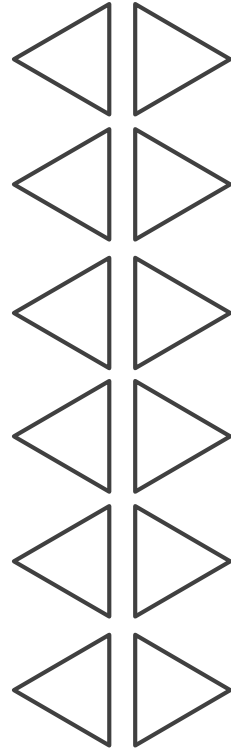


NEAL- MARSHALL BLACK CULTURE CENTER – INDIANA UNIVERSITY



BLACK CULTURAL CENTER – PURDUE UNIVERSITY

# EXTERIOR PATTERNS



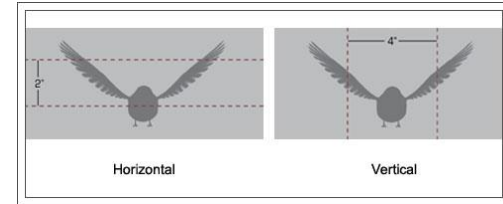


# EXTERIOR PATTERNS

IBC









10' x 20'





# IBC & IHLC

University of Florida

## REVITALIZING OUR ROOTS

SHAPED BY HISTORY

REBUILDING FOR TOMORROW